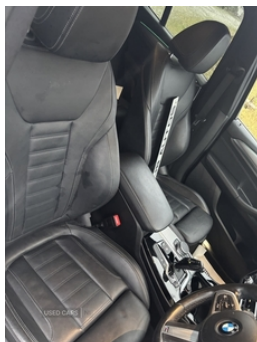


## BMW X3 xDrive20d M Sport 5dr Step Auto | Jul 2019

**£24,750**

### FULL BMW SERVICE HISTORY - HARMON KARDON SURROUND SOUND -



2 Keys, Full BMW Service History!

Reverse Camera, Pro Nav, Heated Seats, SAT Nav, Factory Privacy Glass, DAB, Bluetooth, £3865 Of Factory Extras!

BMW Aero Kit

Optional Extra 20" New Alloys And New Star Rated Run Flat Tyres - £1495

**\*\*Viewing By Appointment Only\*\***

### Vehicle Features

3 rear headrests, 3 zone automatic air conditioning, 4 lashing points to secure luggage, 12V socket in centre console and luggage area, ABS/EBD, Acoustic glazing, Active Guard incl speed limiting and lane departure functions with auto steering, ADB - Automatic Differential Brake, Ambient lighting, and front collision warning with brake intervention, Anthracite headlining, Anthracite Velour floor mats, Attentiveness assist, Automatic Stability Control (ASC), Automatic tailgate operation, Automatic transmission with gearshift paddles, Auxiliary socket for external MP3 player, Battery safety cut-off, Black finish on B pillars, BMW emergency call, BMW Live Cockpit Professional sat nav system including 10.25" high resolution display and Intelligent Voice Assistant, BMW Online services, BMW professional radio/CD/MP3, BMW Teleservices, Body colour door handles, Body coloured bumpers, Body colour electric adjust heated aspherical door mirrors, Body colour roof mouldings, Brake assist, Brake assist function, Brake drying, Brake energy regeneration, Brake pad wear indicator in front and rear, Braking pre-tensioning, CBC -

<b>Miles:</b>	48000
<b>Fuel Type:</b>	Diesel
<b>Transmission:</b>	Semi-Automatic
<b>Colour:</b>	White
<b>Engine Size:</b>	1995
<b>Tax Band:</b>	Petrol/Diesel (£195 p/a)
<b>Body Style:</b>	Sport utility vehicle
<b>Insurance group:</b>	30E
<b>Reg:</b>	YX19ZVR

### Technical Specs

DIMENSIONS	
<b>Length:</b>	4708mm
<b>Width:</b>	1891mm
<b>Height:</b>	1676mm
<b>Seats:</b>	5
<b>Luggage Capacity (Seats Up):</b>	550L
<b>Gross Weight:</b>	2420KG
<b>Max. Loading Weight:</b>	650KG

### PERFORMANCE & ECONOMY

<b>Fuel Consum. (Urban Cold):</b>	49.6MPG
<b>Fuel Consum. (Extra Urban):</b>	54.3MPG
<b>Fuel Consum. (Combined):</b>	52.3MPG
<b>Fuel Tank Capacity:</b>	60L
<b>Number Of Gears:</b>	8 SPEED
<b>Top Speed:</b>	132MPH
<b>Acceleration 0-100 km/h:</b>	8s
<b>Engine Power BHP:</b>	187.7BHP

(Cornering brake control), Central locking switch for all doors, Check Control warning system for monitoring of lights and door/luggage compartment open warning, Child locks on rear doors, Chrome kidney grille with high gloss black vertical slats, clock/date, Connected pack professional - X3, Control display - 6.5" colour display screen, C pillars/mirror frame and triangle with mirror base, Crash Sensor - activation of central locking release, DAB Digital radio, Deactivation of fuel pump in the event of a crash, Diesel particulate filter, Direction indicator, Driver/passenger sunvisors with ticket holders + illuminated vanity mirrors, Driver and front passenger front and side airbags with passenger deactivation and ITS front and rear head airbags, DSC+, Dual chrome exhaust, Dynamic brake control, Dynamic brake lights, Dynamic Traction Control - DTC, Electric Power Steering (EPS) with Servotronic, Electromechanical parking brake, Electronic engine immobiliser, Exterior mirrors - electrically folding with anti-dazzle, Fingertip control / anti-trap function on electric window, Foldable boot floor with storage compartment, Follow me home headlights, Four grab handles integrated in roof lining, Front/rear courtesy lights with soft on/off dimming, Front/rear Parking distance control, Front/rear reading lights, Front and rear bottle holders integrated into door trim storage compartments, Front and rear bumper system with replaceable deformation elements, Front and rear electric windows, Front and rear side armrests integrated into door trim, Front centre armrest with storage compartment, Front footwell lights, Front seat belts warning, Front sports seats, fuel filler cap and luggage compartment, Green tinted heat insulating glass, hazard warning light and interior lighting, Heated windscreen washer jets, Height adjustable front/rear head restraints, Height adjustable headlamps, High gloss black door sill finishers, High gloss black shadow line roof rails, High gloss shadowline exterior trim in decorative moulding side frame/recess cover/guide rail/B, High level 3rd brake light incorporating LED Technology, Hill descent control, Hill start assist, iDrive Controller with 8 favourite buttons, Incorrect fuelling protection, integrated in exterior mirrors, Interior rear view mirror with automatic anti dazzle function, Isofix rear child seat preparation, Larger capacity fuel tank, Leather gear knob, LED front fog lights, LED tail lights, Lights on warning by audio warning signal when ignition is switched off, Lightweight engineering, Locking wheel nuts, Low rolling resistance tyres, Luggage area underfloor compartment, Luggage compartment lighting, M aerodynamic bodystyling, Model designation, M Sport multifunction leather steering wheel, Multi-link rear suspension, Navigation system - BMW Professional multimedia with Hard disc drive (HDD) and 10.25" touch display, odometer/trip meter, Oil sensor for level and grade, On board computer - average speed+fuel consumption, Optimum shift indicator, outside temperature display and ice warning, Parcel shelf removeable and storable under boot floor, Performance Control, Personal Profile - automatic lock when driving away selectable, Rain sensor including auto headlights activation, Reach and rake adjustable steering column, Real time traffic information, Rear centre armrest with 2 cupholders, Rear seat

centre armrest with two cupholders, Rear wiper, Remote control including two integrated key - one button for open/close all lockable content, Remote control Thatcham category 1 alarm, Removable / retractable luggage cover, Seatbelt security check for front seats, Semi digital instrument cluster, service interval, Shark fin antenna, Side impact protection, side repeaters, Slope adjustable rear seats, Start/stop button with Comfort Go keyless engine start and auto Start/stop deactivation button, Stop/start system, Storage compartment in rear centre console and front/rear door trims, Three point seatbelts to all seats with front and outer rear pyrotechnic belt tensioners and seat belt force limiters, Through loading system with 40/20/40 split folding rear seat, Toolkit located in luggage compartment, Two front cupholders with removable oddments tray/lid, Two tone horn, Tyre pressure monitoring system, Ventilated front and rear disc brakes, Vernasca leather upholstery, Visible VIN plate, warning by check control system, Warning triangle and first aid kit, Welcome lighting, windows and separate button for open luggage compartment, Windscreen wipers with adjustable interval